

GYMNASIUM KERAMOTIS

Keramoti - Kavala - Greece

“AFTER - SCHOOL CLUBS to INCREASE MOTIVATION
and PREVENT DROPOUT”



2018 - 2020

NATIONAL PARK OF EASTERN MAKEDONIA & THRACE



NATIONAL PARK OF EASTERN MAKEDONIA & THRACE

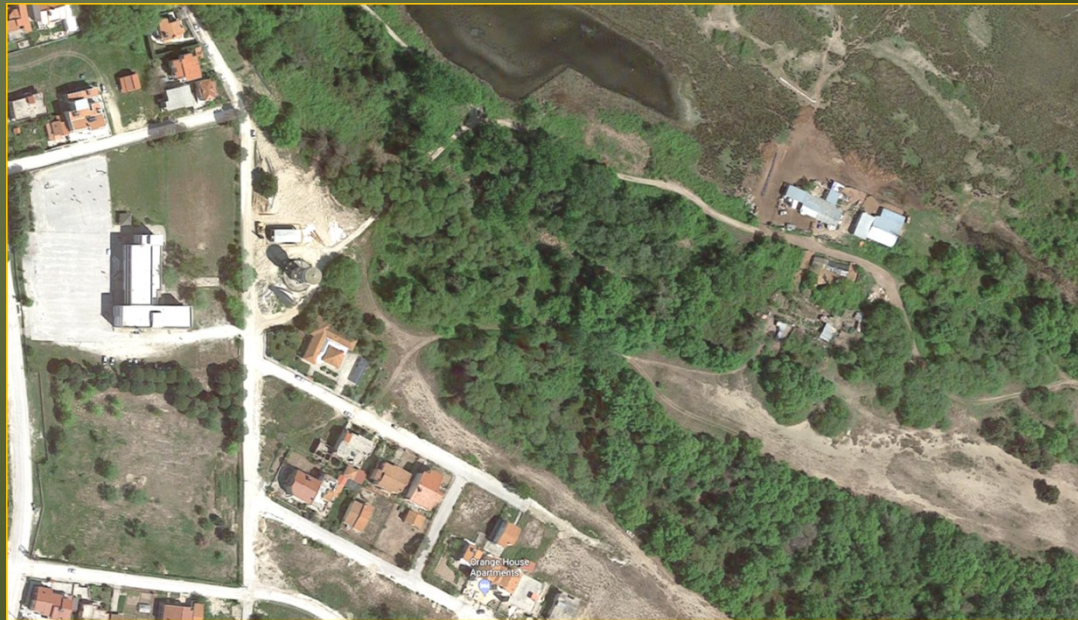
- The Eastern Macedonia - Thrace National Park was established in 2008 and included the already protected areas of Nestos Municipality, Vistonida Lake, Ismarida Lake and their wider region. The wetland park of the National Park is one of the most important in Greece because of its large area (930,000 acres) and its great biological, aesthetic, scientific, geomorphological and pedagogical value. The purpose of the National Park is to effectively protect the habitats and rare species of flora and fauna that are endemic and reproduce in the area.

NATIONAL PARK OF EASTERN MAKEDONIA & THRACE

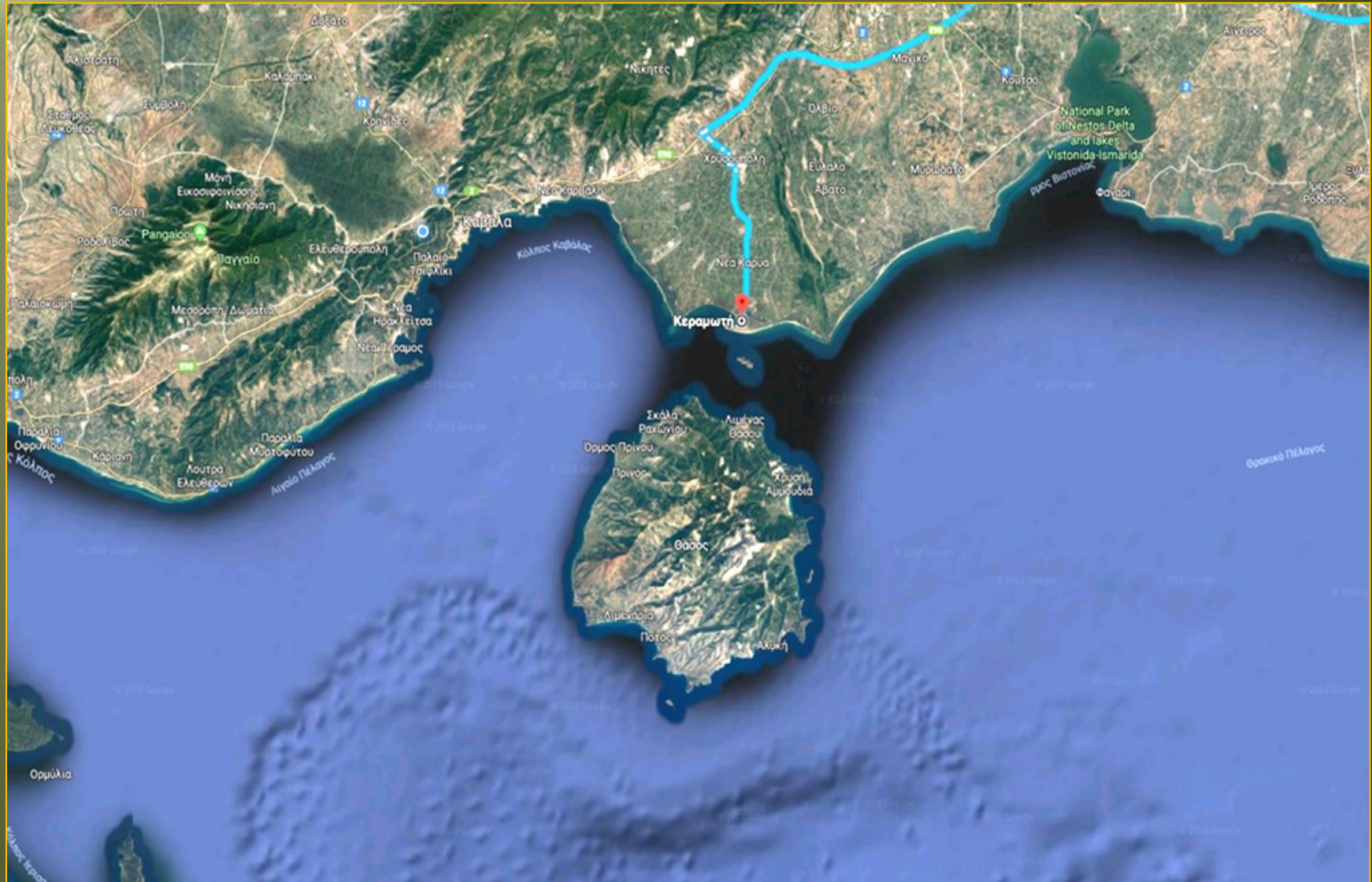
- Established management body of the East Macedonia-Thrace National Park is the Nestos Management Authority of Nestos Vistonida - Ismarida, which is a non-profit legal entity of Private Law and was established in April 2003 by Ministerial Decision of the Ministries of Environment, Agriculture and Development.

NATIONAL PARK OF EASTERN MAKEDONIA & THRACE

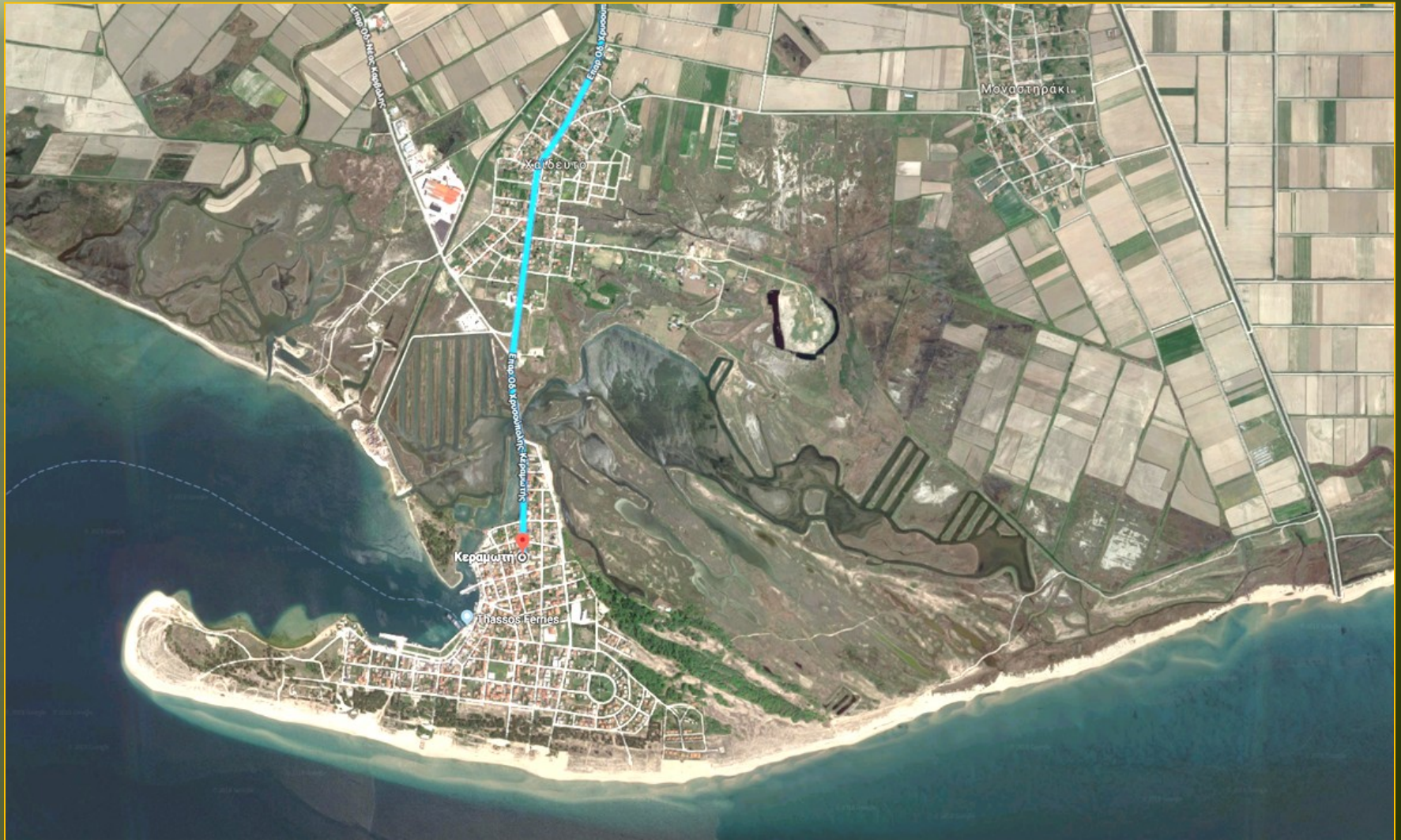
- Our school - Keramoti High School - is located within the protected area of the Eastern Macedonia and Thrace National Park and specifically in the complex of lagoons that have been created at the estuary of the Nestos River.



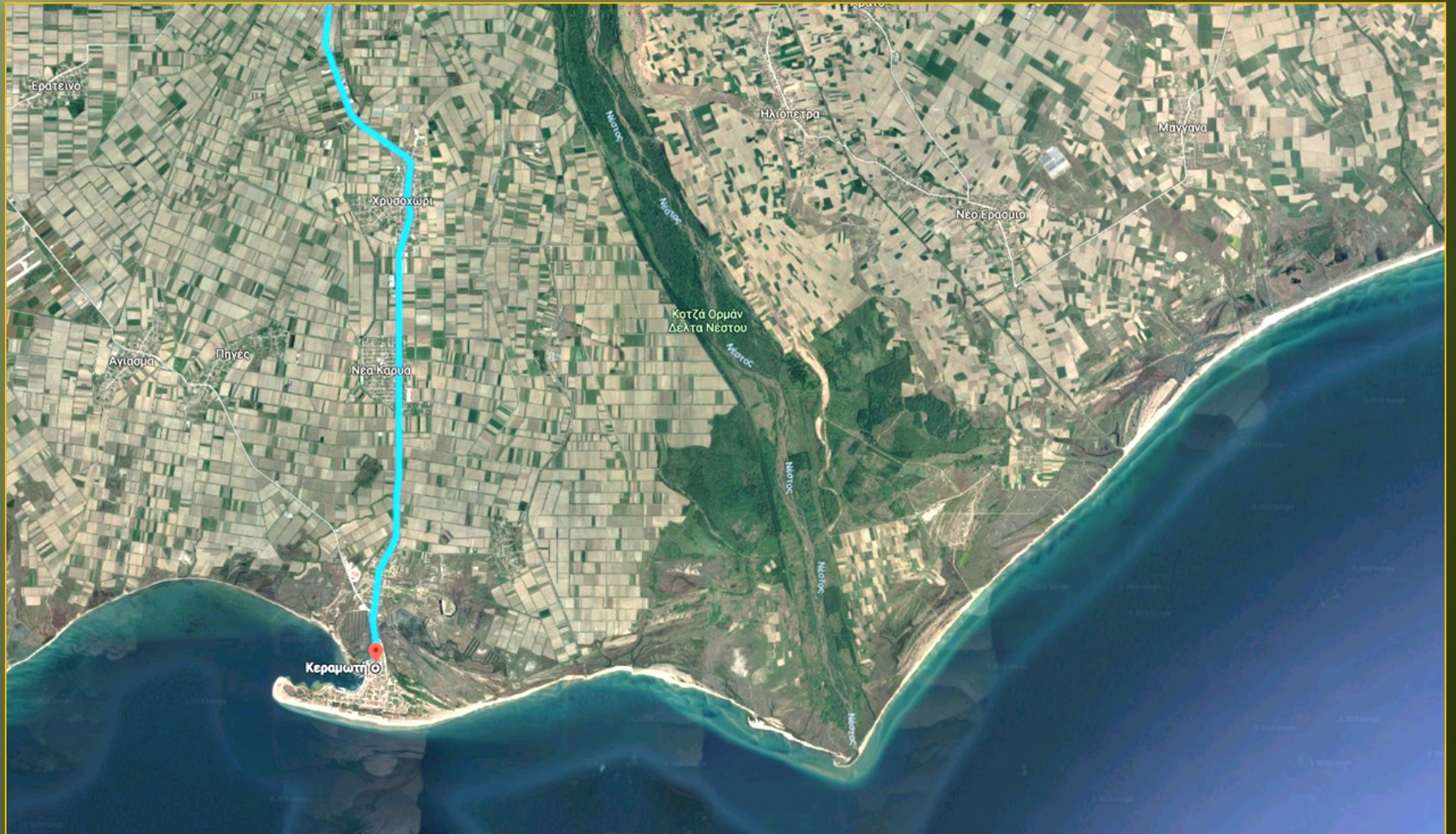
NATIONAL PARK OF EASTERN MAKEDONIA & THRACE



NATIONAL PARK OF EASTERN MAKEDONIA & THRACE



NATIONAL PARK OF EASTERN MAKEDONIA & THRACE



NATIONAL PARK OF EASTERN MAKEDONIA & THRACE



NATIONAL PARK OF EASTERN MAKEDONIA & THRACE

- Wetlands

“areas naturally or artificially covered, permanently or seasonally by standing or flowing sweets, brackish or salty waters, including areas covered by seawater, the depth of which does not exceed 6 meters at low tide”



NATIONAL PARK OF EASTERN MAKEDONIA & THRACE

WATER VALUES

- ✓ **Biological diversity**
- ✓ **Storage of irrigation water**
- ✓ **Catch production - Farming of farm animals**
- ✓ **Improving water quality - Commitment**

Carbon dioxide

- ✓ **Leisure - Education - Research**

NATIONAL PARK OF EASTERN MAKEDONIA & THRACE

WATERS OF INTERNATIONAL SIGNIFICANCE

The great importance of wetlands has led to the adoption
of global protection measures

Convention on Wetlands of International Importance
- *RAMSAR Convention*

It was signed in 1971 in the city of Ramsar,
Iran

NATIONAL PARK OF EASTERN MAKEDONIA & THRACE

The National Park of Western Macedonia and Thrace was established in 2008 (K.Y.A. 44549, ΦΕΚ 497 / Δ / 17-10-2008) and included the areas of the protected wetlands D. Nestou, L. Vistonida , L. Ismarida and their wider area with a total land area of 727,000 acres.

The Nestos Management Facility of Nestos Vistonida-Ismarida is NPIC non-profit making organization and was established in April 2003, with a Joint Ministerial Decision of the Ministries of Environment, Agriculture and Development, as an institutionalized management body for the National Park of Amathus.

NATIONAL PARK OF EASTERN MAKEDONIA & THRACE

The main purposes of the national park they are:

- Conservation of natural resources and biodiversity.
- Restoration and conservation of ecological balance.
- Informing and raising awareness of the local people.
- The local development of human activities.
- Environmental education and the development of ecotourism.
- The social, economic and cultural development of the wider region.

NATIONAL PARK OF EASTERN MAKEDONIA & THRACE

It includes the following areas:

- DELTA NESTOU AND KERAMOTIS LAKES
 - VISTONIDA - ISMARIDA
 - LAKES PORTO LAGOS
- LAKES RODOPIS PREFECTURE

NATIONAL PARK OF EASTERN MAKEDONIA & THRACE

Information about the region and its values,
in the exhibition center of the Information Centers.



NATIONAL PARK OF EASTERN MAKEDONIA & THRACE

Environmental games



NATIONAL PARK OF EASTERN MAKEDONIA & THRACE Environmental games



NATIONAL PARK OF EASTERN MAKEDONIA & THRACE Environmental games



NATIONAL PARK OF EASTERN MAKEDONIA & THRACE



NATIONAL PARK OF EASTERN MAKEDONIA & THRACE



***THANK YOU
FOR YOUR ATTENTION***

